



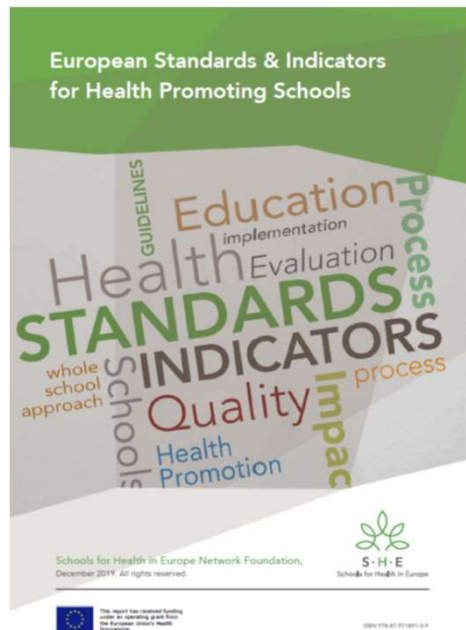
S·H·E

Schools for Health in Europe

SHE Research Group Meeting

28th October 2020

SHE workplan 2020 - highlights



HPS Mapping



SHE factsheet no 6



Teachers Training Material



SHE academy



SHE School Manual



HPS standards + indicators

Other initiatives in 2020

- Member of technical advisory group (TAG) for safe schooling during COVID-19 times.
- Letter to all schools from SHE in the beginning of COVID-19 – both to encourage and to invite them to share promising practice (SHE website).
- A series of 6 videos (SHEs You Tube platform).
- Guidelines on how to represent SHE.
- School certificates.
- Translations payed by member countries, e.g. SHE factsheets and European standards and indicators
- Translation of SHE tools into Russian (SHE Branch Moscow Office)

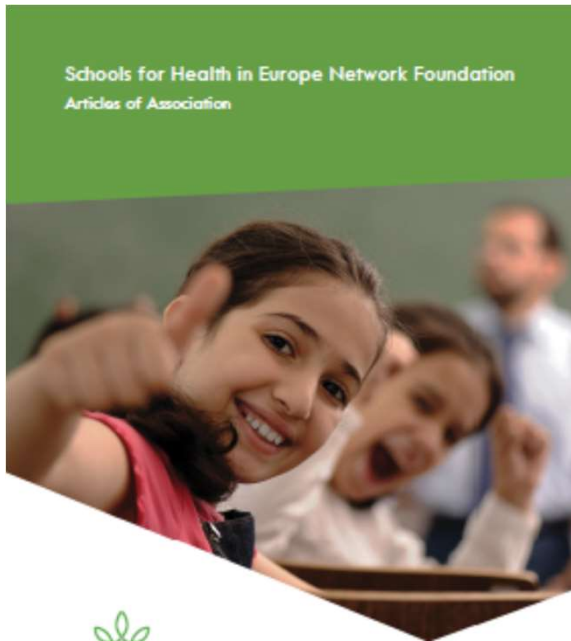


S·H·E

Schools for Health in Europe

Revision of SHE Articles of association

- Develop and provide materials on school health promotion.
- in agreement with the Paris Declaration, SHE focuses on implementing school health promotion to make every school in the WHO European region and Central Asia a setting that promotes health and well-being for all



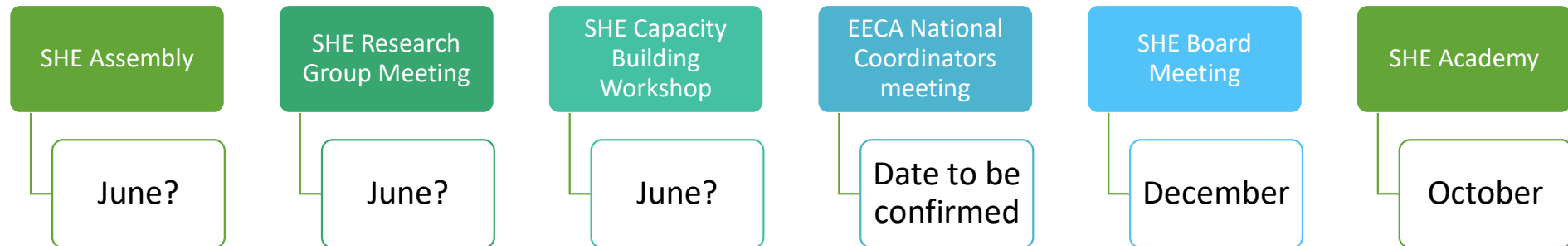
Schools for Health in Europe Network Foundation
Articles of Association



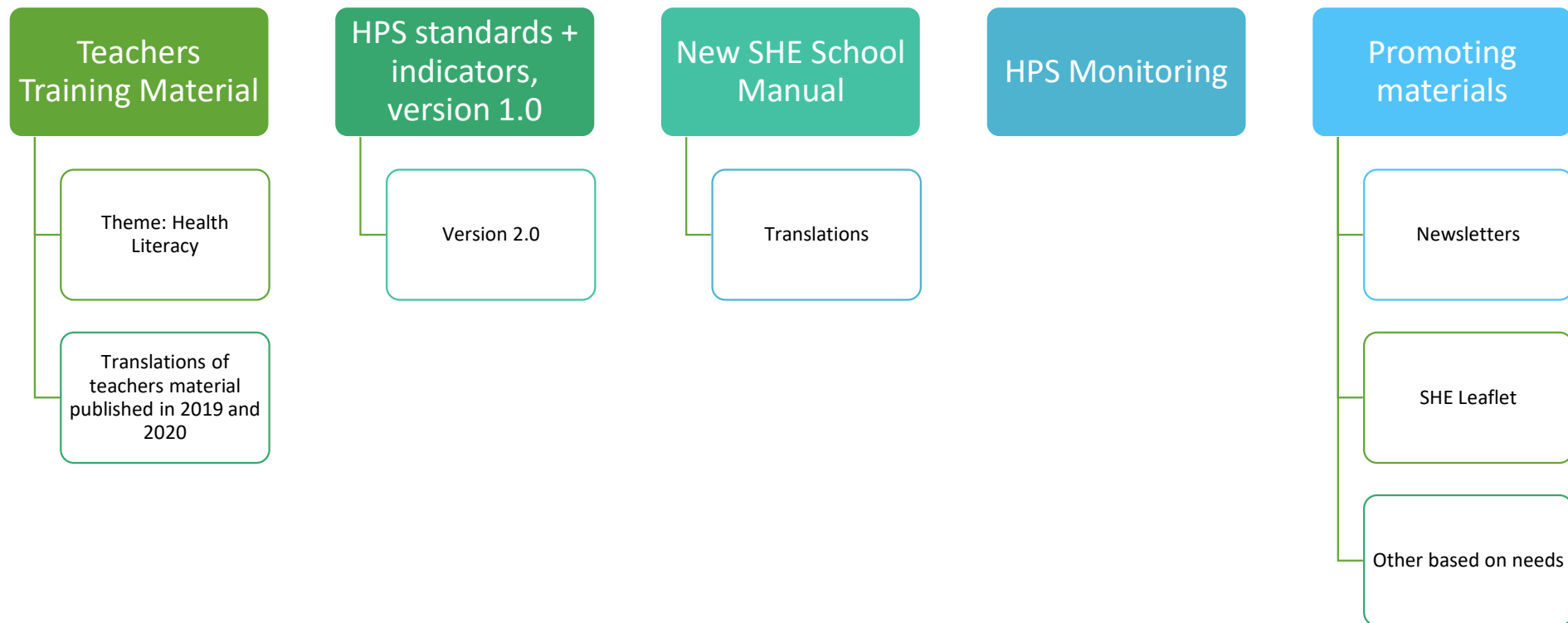
S·H·E
Schools for Health in Europe

Date of document: 4 February 2020
Author: Anette Schulz
Place: København, Denmark

SHE workplan 2021



SHE workplan 2021



SHE work plan 2021

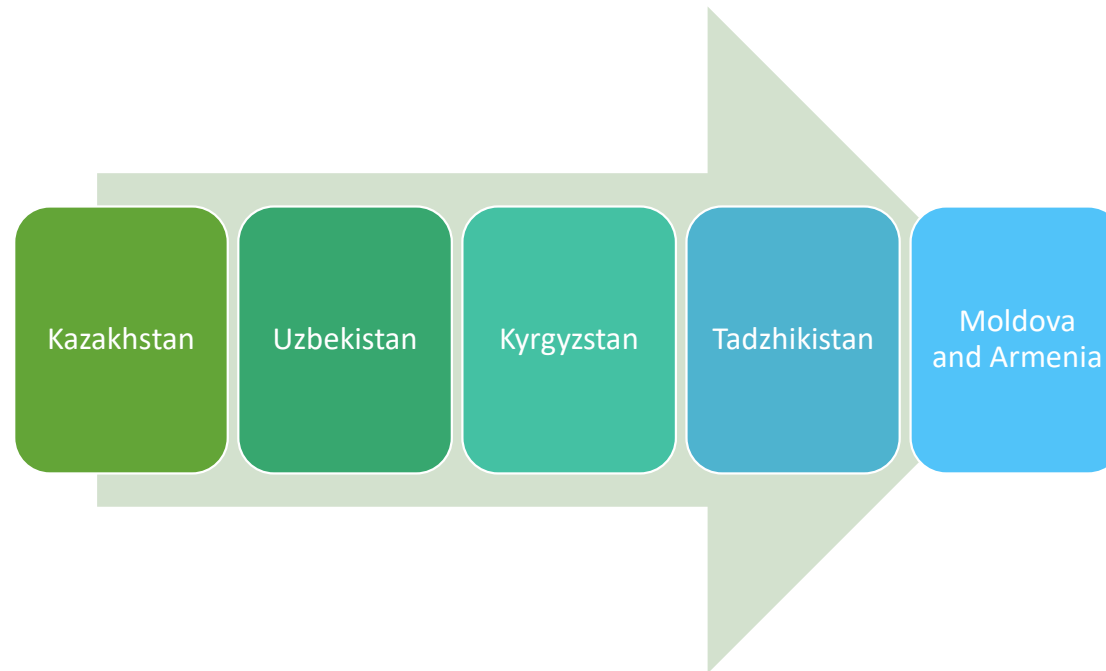


SHE workplan 2021



SHE work plan 2020

- Country missions together with WHO and SHE Branch Office in Moscow.



Questions





S · H · E

Schools for Health in Europe

Schools for Health in Europe

Network Foundation

p/a UC South Denmark

Lembckesvej 7

6100 Haderslev - Denmark

www.schoolsforhealth.org